

# **MERA System Operations Update**

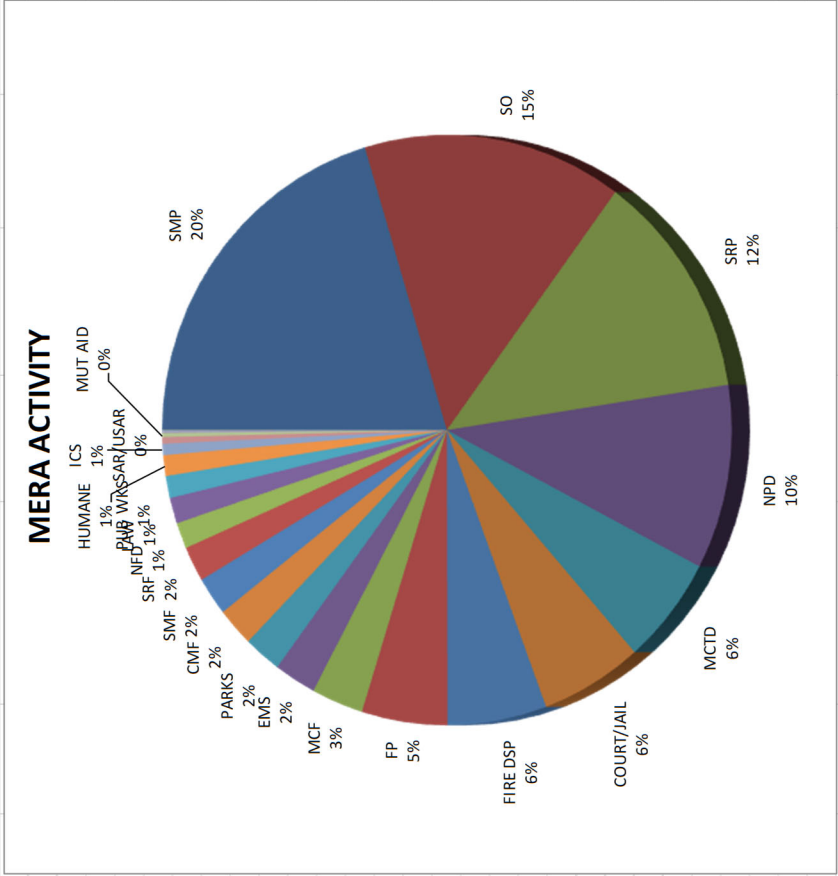
## **MERA System Maintenance**

During September, the Radio Shop provided the following support:

1. Completed all required Weekly preventative maintenance tasks.
2. Completed all required Quarterly preventative maintenance tasks.
3. Participated in Next-Gen discussions.
4. Replaced a Picket Filter on the microwave link to Pt Reyes
5. Discovered Big Rock de-sense issue. Investigating.
6. Resolved Tamalpias Channel 6 issue where receiver was resetting
7. Resolved Ring down issue at Woodacre.

**MERA System Usage SEPTEMBER 2018**

Grouping	Radio Calls	Call Time	Busy Time	Category	Radio Calls	Call Time	Busy Time	Percent Usage
SMP	48,620	150:03:11	0:00:00	LAW TOTAL: FIRE TOTAL: PUBLIC WORKS TOTAL: NON-MERA TOTAL:	177,115	514:42:46	0:00:00	69.8
SO	35,063	108:36:56	0:00:00		51,354	139:46:38	0:00:00	19.0
SRP	30,796	91:53:49	0:00:00		24,651	72:56:58	0:00:00	9.9
NPD	25,965	74:28:25	0:00:00		3,610	9:56:00	0:00:00	1.3
MCTD	14,480	43:32:02	0:00:00					
COURT/JAIL	19,714	42:39:55	0:00:00					
FIRE DSP	16,609	41:30:26	0:00:00		256,730	737:22:22	0:00:00	100.0
FP	12,700	35:51:20	0:00:00					
MCF	7,499	21:40:42	0:00:00					
EMS	2,744	17:38:41	0:00:00					
PARKS	5,528	15:45:40	0:00:00					
CMF	6,522	15:39:31	0:00:00					
SMF	6,781	15:34:06	0:00:00					
SRF	6,217	14:13:33	0:00:00					
NFD	4,016	10:28:08	0:00:00					
LAW	4,019	10:25:23	0:00:00					
PUB WKS	3,254	8:55:51	0:00:00					
HUMANE	2,939	8:21:30	0:00:00					
ICS	1,330	4:33:19	0:00:00					
SAR/USAR	893	2:43:16	0:00:00					
MUT AID	671	1:34:30	0:00:00					
CMP	238	0:43:47	0:00:00					
FIRE MSC	73	0:18:15	0:00:00					
OTHER	59	0:10:06	0:00:00					
<b>TOTAL:</b>	<b>256,730</b>	<b>737:22:22</b>	<b>0:00:00</b>					



**MERA System Usage Annual 2018**

Agency Grouping	Radio Calls	Call Time	Busy Time	Category	Radio Calls	Call Time	Busy Time	Percent Usage
SO	302,642	935:45:46	0:00:01	LAW TOTAL: FIRE TOTAL: PUBLIC WORKS TOTAL: NON-MERA TOTAL:	1,557,187	4490:47:43	0:00:10	70.2
CMP	268,455	820:23:12	0:00:00		456,240	1229:52:06	0:00:18	19.2
SRP	269,399	815:23:18	0:00:01		208,039	592:44:47	0:00:01	9.3
NPD	243,039	694:54:27	0:00:03		28,206	81:48:19	0:00:00	1.3
COURT/JAIL	181,815	389:23:45	0:00:02					
SMP	128,473	385:26:17	0:00:00					
FIRE DSP	145,875	364:54:31	0:00:11					
MCTD	117,373	341:39:39	0:00:00					
FP	116,604	329:09:29	0:00:03					
MCF	63,372	181:19:37	0:00:01					
SMF	67,785	157:09:36	0:00:00					
EMS	24,686	151:06:36	0:00:03					
PARKS	48,885	137:43:15	0:00:00					
CMF	56,080	136:07:05	0:00:00					
SRF	56,796	133:02:01	0:00:01					
LAW	46,761	120:21:29	0:00:00					
NFD	36,863	92:10:23	0:00:02					
PUB WKS	33,736	89:30:55	0:00:01					
HUMANE	26,352	77:05:18	0:00:00					
ICS	7,034	20:37:18	0:00:00					
SARIUSAR	3,985	11:14:46	0:00:00					
MUT AID	1,854	4:43:01	0:00:00					
OTHER	1,012	3:13:40	0:00:00					
FIRE MSC	798	2:47:30	0:00:00					
<b>TOTAL:</b>	<b>2,249,672</b>	<b>6395:12:54</b>	<b>0:00:29</b>		<b>2,249,672</b>	<b>6395:12:54</b>	<b>0:00:29</b>	<b>100.0</b>

