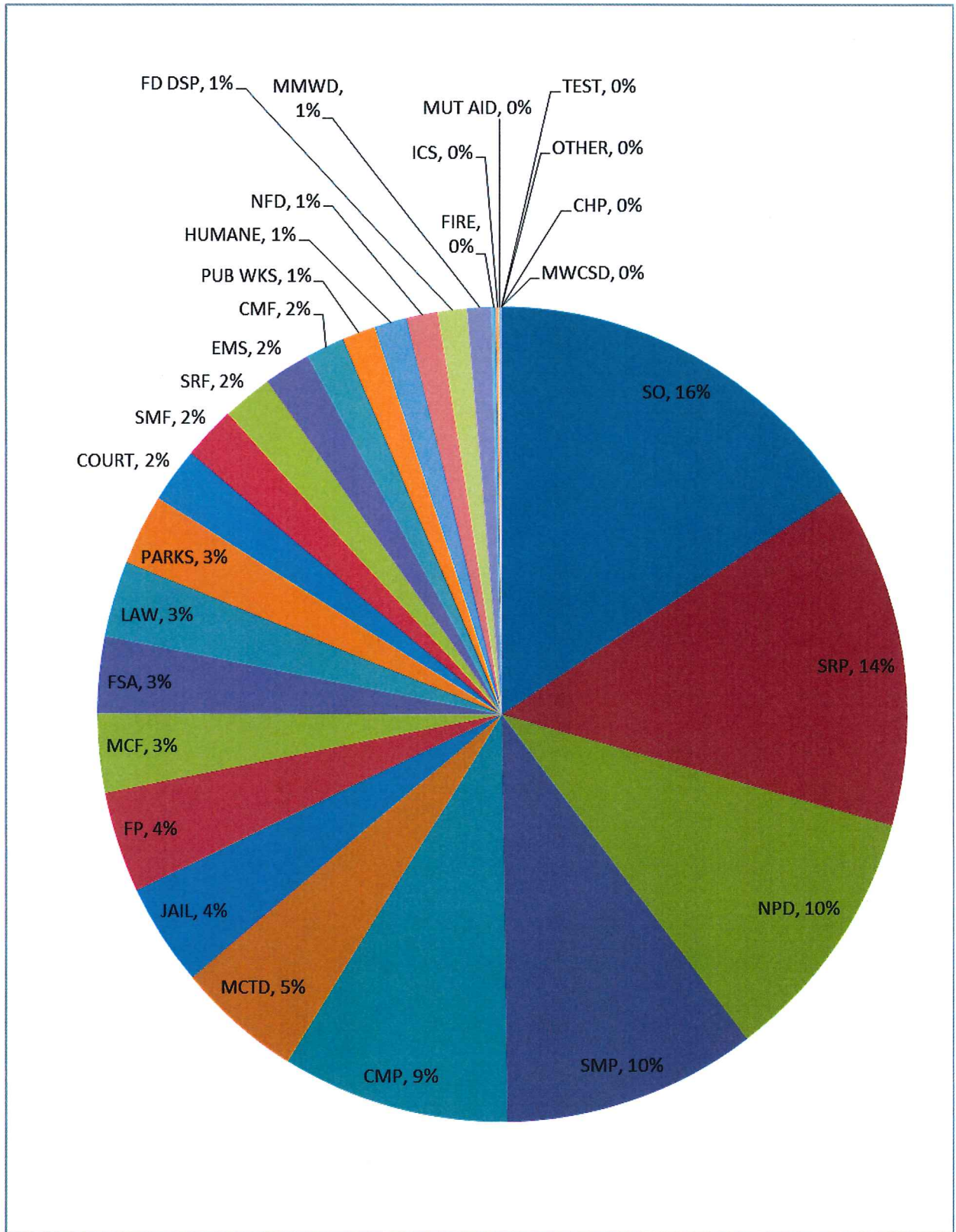


MERA SYSTEM AUGUST 2013 USAGE

	For the Month of :		August		2013
	<u>Radio</u> <u>Calls</u>	<u>Radio</u> <u>Hours</u>	<u>Busy</u> <u>Count</u>	<u>Busy</u> <u>Seconds</u>	<u>Percent</u> <u>Usage</u>
SO	76,646	120:06:34	14	0:00:05	15.8%
SRP	72,615	103:27:07	15	0:00:05	13.6%
NPD	52,733	77:58:18	3	0:00:01	10.2%
SMP	48,102	77:21:06	2	0:00:00	10.2%
CMP	50,815	68:52:41	1	0:00:01	9.0%
MCTD	23,187	38:16:11	1	0:00:00	5.0%
JAIL	23,538	30:51:06	2	0:00:00	4.1%
FP	20,901	30:34:26	0	0:00:00	4.0%
MCF	14,061	23:47:57	11	0:00:03	3.1%
FSA	5,725	23:09:10	0	0:00:00	3.0%
LAW	13,185	22:55:34	0	0:00:00	3.0%
PARKS	11,457	21:22:53	0	0:00:00	2.8%
COURT	10,238	16:31:17	0	0:00:00	2.2%
SMF	10,941	16:23:39	1	0:00:01	2.2%
SRF	10,031	15:15:26	4	0:00:02	2.0%
EMS	4,850	14:11:33	0	0:00:00	1.9%
CMF	7,603	11:40:04	1	0:00:00	1.5%
PUB WKS	5,870	10:07:07	2	0:00:00	1.3%
HUMANE	5,448	9:47:38	1	0:00:00	1.3%
NFD	5,931	9:21:02	0	0:00:00	1.2%
FD DSP	2,888	8:40:37	1	0:00:00	1.1%
MMWD	4,077	7:25:33	0	0:00:00	1.0%
FIRE	705	1:12:05	0	0:00:00	0.2%
ICS	651	1:00:05	0	0:00:00	0.1%
MUT AID	393	0:40:19	0	0:00:00	0.1%
TEST	162	0:14:56	0	0:00:00	0.0%
CHP	1	0:00:05	0	0:00:00	0.0%
MWCSD	1	0:00:05	0	0:00:00	0.0%
OTHER	0	0:00:00	0	0:00:00	0.0%
RPD	0	0:00:00	0	0:00:00	0.0%
SCHOOL	0	0:00:00	0	0:00:00	0.0%
Totals:	482,755	761:14:34	59	0:00:18	100.0
Previous Month:	454,613	764:12:26	55	0:00:53	

NERA SYSTEM AUGUST 2013 USAGE

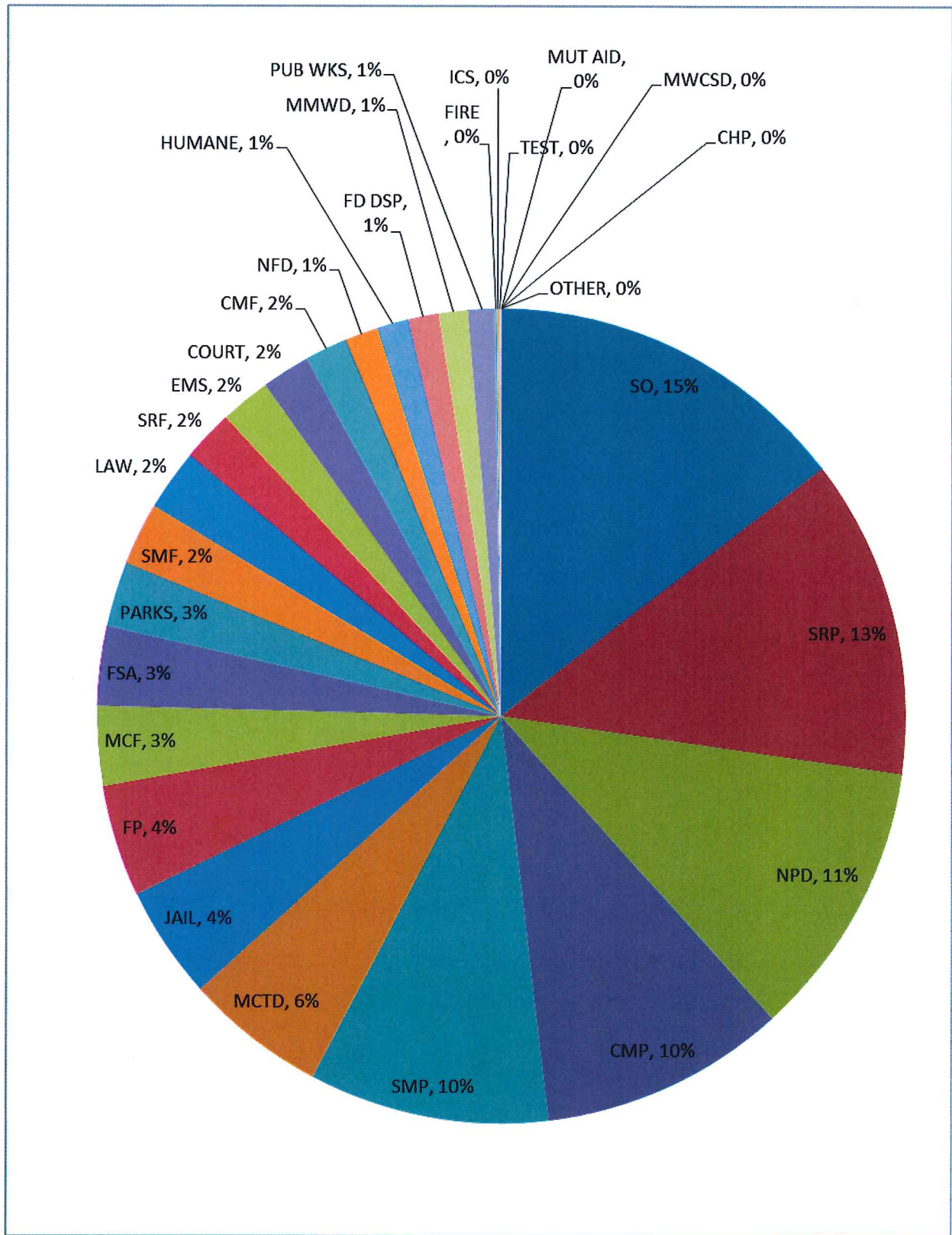


MERA SYSTEM SEPTEMBER 2013 USAGE

For the Month of : September 2013

	<u>Radio Calls</u>	<u>Radio Hours</u>	<u>Busy Count</u>	<u>Busy Seconds</u>	<u>Percent Usage</u>
SO	67,336	105:37:21	9	0:00:12	14.57%
SRP	64,906	91:50:57	2	0:00:00	12.67%
NPD	54,937	79:49:12	0	0:00:00	11.01%
CMP	51,568	70:58:22	0	0:00:00	9.79%
SMP	43,147	69:50:06	2	0:00:00	9.63%
MCTD	24,612	40:46:15	1	0:00:00	5.62%
JAIL	24,364	32:24:48	0	0:00:00	4.47%
FP	21,861	32:09:37	0	0:00:00	4.44%
MCF	13,732	22:56:14	1	0:00:00	3.16%
FSA	5,759	22:53:35	0	0:00:00	3.16%
PARKS	9,867	18:37:53	0	0:00:00	2.57%
SMF	11,626	17:59:06	0	0:00:00	2.48%
LAW	8,789	17:38:23	1	0:00:01	2.43%
SRF	9,670	14:50:01	2	0:00:01	2.05%
EMS	4,999	14:23:53	0	0:00:00	1.99%
COURT	8,677	14:04:25	0	0:00:00	1.94%
CMF	8,164	12:14:22	0	0:00:00	1.69%
NFD	5,783	9:27:21	3	0:00:02	1.30%
HUMANE	5,070	9:17:07	0	0:00:00	1.28%
FD DSP	2,950	8:53:45	1	0:00:00	1.23%
MMWD	4,421	8:12:56	0	0:00:00	1.13%
PUB WKS	4,336	7:47:06	2	0:00:15	1.07%
FIRE	361	0:41:58	0	0:00:00	0.10%
ICS	434	0:40:33	0	0:00:00	0.09%
TEST	284	0:24:26	0	0:00:00	0.06%
MUT AID	173	0:15:31	0	0:00:00	0.04%
MWCSD	54	0:06:31	0	0:00:00	0.01%
CHP	0	0:00:00	0	0:00:00	0.00%
OTHER	0	0:00:00	0	0:00:00	0.00%
RPD	0	0:00:00	0	0:00:00	0.00%
SCHOOL	0	0:00:00	0	0:00:00	0.00%
Totals:	457,880	724:51:44	24	0:00:31	100.0
Previous Month:	454,613	764:12:26	55	0:00:53	

MERA SYSTEM SEPTEMBER 2013 USAGE

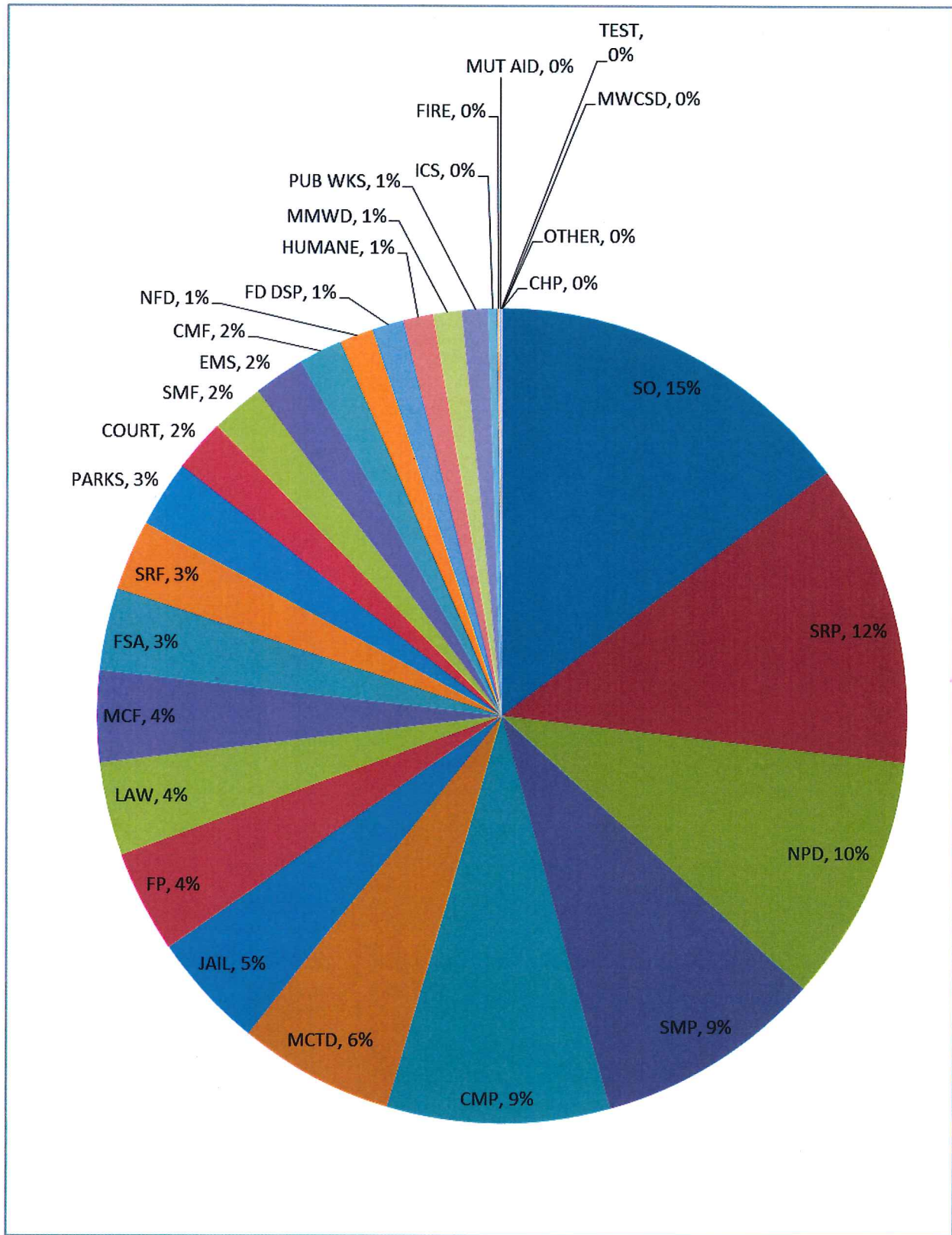


MERA SYSTEM OCTOBER 2013 USAGE

For the Month of : **October 2013**

	<u>Radio Calls</u>	<u>Radio Hours</u>	<u>Busy Count</u>	<u>Busy Seconds</u>	<u>Percent Usage</u>
SO	36,349	105:20:34	0	0:00:00	14.78%
SRP	60,820	85:35:37	3	0:00:02	12.01%
NPD	47,705	69:57:38	2	0:00:00	9.82%
SMP	39,779	64:25:40	0	0:00:00	9.04%
CMP	44,982	63:29:01	3	0:00:01	8.91%
MCTD	26,629	44:16:05	2	0:00:02	6.21%
JAIL	15,690	32:43:31	0	0:00:00	4.59%
FP	19,773	29:02:47	0	0:00:00	4.08%
LAW	12,369	26:22:33	0	0:00:00	3.70%
MCF	15,325	25:48:12	1	0:00:00	3.62%
FSA	5,753	23:13:46	0	0:00:00	3.26%
SRF	12,887	19:50:52	1	0:00:00	2.79%
PARKS	9,522	18:53:47	0	0:00:00	2.65%
COURT	5,436	14:55:24	0	0:00:00	2.09%
SMF	10,164	14:51:37	0	0:00:00	2.09%
EMS	5,233	14:51:29	0	0:00:00	2.08%
CMF	8,300	12:19:09	0	0:00:00	1.73%
NFD	5,842	9:28:01	0	0:00:00	1.33%
FD DSP	2,902	8:57:13	0	0:00:00	1.26%
HUMANE	4,664	8:34:39	0	0:00:00	1.20%
MMWD	4,232	8:03:11	0	0:00:00	1.13%
PUB WKS	4,099	7:31:32	0	0:00:00	1.06%
ICS	1,316	2:30:21	0	0:00:00	0.35%
FIRE	343	0:36:57	0	0:00:00	0.09%
MUT AID	343	0:31:37	0	0:00:00	0.07%
TEST	247	0:20:37	0	0:00:00	0.05%
MWCSD	56	0:05:25	0	0:00:00	0.01%
CHP	11	0:00:21	0	0:00:00	0.00%
OTHER	0	0:00:00	0	0:00:00	0.00%
RPD	0	0:00:00	0	0:00:00	0.00%
SCHOOL	0	0:00:00	0	0:00:00	0.00%
Totals:	400,771	712:37:36	12	0:00:05	100.0
Previous Month:	454,613	764:12:26	55	0:00:53	

MERA SYSTEM OCTOBER 2013 USAGE



MERA System Member and Non-Member Usage
August 2013

User	MERA Member	Member			Non-Member		
		Calls	Duration (Hrs)	Percent	Calls	Duration (Hrs)	Percent
American Red Cross	No	0	0:00:00	0.0%	7,951	13:27:08	2.6%
American Medical Response (AMR)	No	88	0:21:25	0.1%			
CA State Parks	No	72	0:06:01	0.0%			
CHP	No	237	0:22:29	0.1%			
Fish & Game	No	2	0:00:08	0.0%			
GGNRA FIRE	No	111	0:10:02	0.0%			
GGNRA NPS LAW	No	71	0:07:14	0.0%			
Humane Society	No	5,074	8:05:47	1.6%			
NOR-CAL Ambulance	No	129	0:21:32	0.1%			
Pro Transport	No	19	0:02:50	0.0%			
Pt. Reyes National Sea Shore	No	1,960	3:20:56	0.7%			
San Antonio Volunteer Fire Company	No	8	0:00:46	0.0%			
Sonoma Co. SO	No	0	0:00:00	0.0%			
St. Joe's Ambulance Svc.	No	180	0:27:58	0.1%			
USCG CAMSPAC	No	0	0:00:00	0.0%			
XSN CA OES COMM	No	0	0:00:00	0.0%			
		7951	13:27:08	2.6%			
Bolinas Fire Protection District	Yes	292	0:28:00	0.1%			
Central Marin Police Authority	Yes	31,276	40:31:39	8.0%			
City of Belvedere PD & PW	Yes	1,947	2:50:28	0.6%			
City of Larkspur Fire & PW	Yes	868	1:15:18	0.2%			
City of Mill Valley FD, PD, PW	Yes	13,623	18:20:44	3.6%			
City of Novato PD & PW	Yes	35,654	49:51:21	9.8%			
City of San Rafael FD, PD, PW	Yes	54,967	73:58:48	14.6%			
City of Sausalito PD & PW	Yes	12,577	18:04:47	3.6%			
County of Marin (All Departments)	Yes	122,336	191:14:10	37.7%			
Inverness Public Utility District	Yes	313	0:30:41	0.1%			
Kentfield Fire Protection District	Yes	363	0:27:54	0.1%			
Marin Community College District	Yes	1,933	2:39:53	0.5%			
Marin County Transit District	Yes	25,824	38:18:32	7.5%			
Marin Municipal Water District Rangers	Yes	4,670	7:57:54	1.6%			
Marinwood Community Services District	Yes	637	0:53:38	0.2%			
Muir Beach	Yes	49	0:04:28	0.0%			
Novato Fire Protection District	Yes	4,185	7:26:25	1.5%			
Ross Valley Fire Service	Yes	2,060	3:05:31	0.6%			
Skywalker Ranch Fire Brigade	Yes	66	0:05:41	0.0%			
Southern Marin Fire Protection District	Yes	4,826	7:03:08	1.4%			
Stinson Beach Fire Protection District	Yes	565	0:49:13	0.2%			
Tiburon Fire Protection District	Yes	1,014	1:42:19	0.3%			
Town of Corte Madera Fire & PW	Yes	1,169	1:59:06	0.4%			

Town of Fairfax PD & PW	Yes	9,688	13:24:14	2.6%
Town of Ross FD & PD	Yes	1,788	2:26:11	0.5%
Town of San Anselmo PW	Yes	0	0:00:00	0.0%
Town of Tiburon PD & PW	Yes	6,407	8:45:13	1.7%
		339,097	494:15:16	97.4%