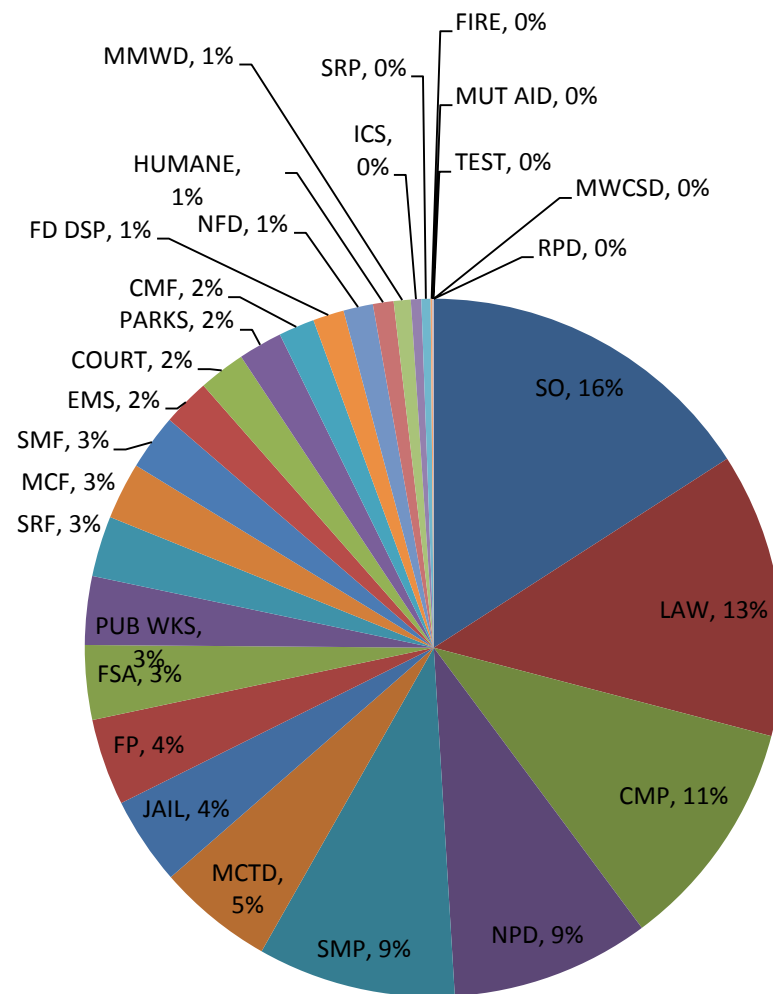


MERA EXECUTIVE COMMITTEE

SYSTEM OPERATIONS REPORT

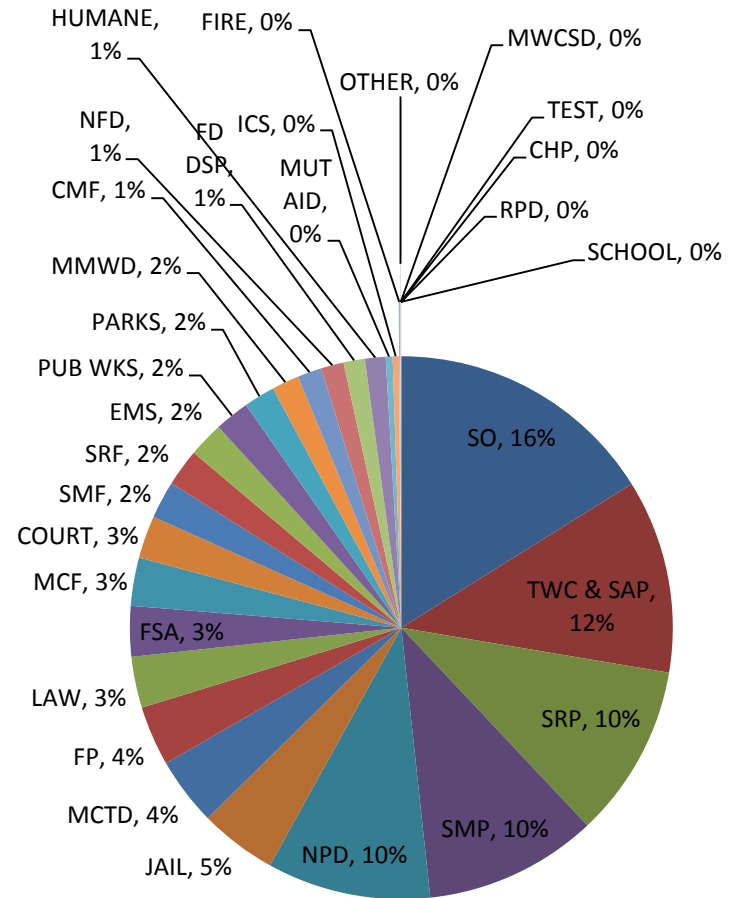
NERA SYSTEM USAGE FOR DECEMBER 2012

	Radio Calls	Radio Hours	Busy Count	Busy Seconds	Busy Sec. Per Count	Busy Sec. Per Call	Percent Busy
SO	70,385	116.4	19	6	0.316	0.000	0.001
LAW	62,885	96.6	2	1	0.500	0.000	0.000
CMP	52,024	78.8	1	0	0.000	0.000	0.000
NPD	44,209	67.4	0	0	0.000	0.000	0.000
SMP	39,827	67.2	6	4	0.667	0.000	0.002
MCTD	22,088	39.3	5	1	0.200	0.000	0.001
JAIL	21,732	29.9	0	0	0.000	0.000	0.000
FP	19,629	29.4	8	1	0.125	0.000	0.001
FSA	5,247	25.3	1	2	2.000	0.000	0.002
PUB WKS	12,908	23.2	17	15	0.882	0.001	0.018
SRF	13,202	20.6	0	0	0.000	0.000	0.000
MCF	10,781	19.3	9	5	0.556	0.000	0.007
SMF	11,600	18.9	6	4	0.667	0.000	0.006
EMS	5,191	16.1	1	0	0.000	0.000	0.000
COURT	9,253	15.9	0	0	0.000	0.000	0.000
PARKS	7,185	14.9	0	0	0.000	0.000	0.000
CMF	7,468	12.2	1	1	1.000	0.000	0.002
FD DSP	3,492	10.6	6	7	1.167	0.002	0.018
NFD	5,751	10.0	2	2	1.000	0.000	0.006
HUMANE	3,922	7.0	0	0	0.000	0.000	0.000
MMWD	3,044	5.8	1	0	0.000	0.000	0.000
ICS	1,856	3.5	0	0	0.000	0.000	0.000
SRP	1,953	3.1	0	0	0.000	0.000	0.000
FIRE	287	0.6	0	0	0.000	0.000	0.000
MUT AID	172	0.3	0	0	0.000	0.000	0.000
TEST	138	0.1	0	0	0.000	0.000	0.000
MWCSD	5	0.0	0	0	0.000	0.000	0.000
RPD	6	0.0	0	0	0.000	0.000	0.000
CHP	0	0.0	0	0	0.000	0.000	0.000
OTHER	0	0.0	0	0	0.000	0.000	0.000
SCHOOL	0	0.0	0	0	0.000	0.000	0.000
<hr/>							
Totals:	436,240	732.5	85	49	0.576	0.000	0.002
Previous Month:	429,997	720.7	45	17	0	0	0
Change:	6,243	11.9	40	32	0.199	0.000	0.001



NERA SYSTEM - ANNUAL USAGE FOR 2012

	Radio Calls	Radio Hours	Busy Count	Busy Seconds	Busy Sec. Per Count	Busy Sec. Per Call	Percent Busy
SO	862,890	1,444.1	235	114	0.485	0.000	0.002
TWC & SAP	700,265	1,033.3	54	29	0.537	0.000	0.001
SRP	623,747	926.2	37	17	0.459	0.000	0.001
SMP	544,349	923.8	54	27	0.500	0.000	0.001
NPD	576,146	873.1	25	10	0.400	0.000	0.000
JAIL	299,297	411.0	9	8	0.889	0.000	0.001
MCTD	213,758	363.6	64	39	0.609	0.000	0.003
FP	213,370	318.9	30	13	0.433	0.000	0.001
LAW	143,998	272.9	8	4	0.500	0.000	0.000
FSA	61,159	268.8	37	80	2.162	0.001	0.008
MCF	145,824	257.4	130	69	0.531	0.000	0.007
COURT	129,852	226.9	10	5	0.500	0.000	0.001
SMF	124,999	200.3	57	58	1.018	0.000	0.008
SRF	127,305	198.5	12	6	0.500	0.000	0.001
EMS	62,216	188.3	9	1	0.111	0.000	0.000
PUB WKS	92,238	184.7	25	22	0.880	0.000	0.003
PARKS	83,828	166.4	18	7	0.389	0.000	0.001
MMWD	78,832	145.7	14	3	0.214	0.000	0.001
CMF	79,227	128.9	18	7	0.389	0.000	0.002
NFD	70,315	121.1	14	6	0.429	0.000	0.001
FD DSP	38,262	113.4	19	13	0.684	0.000	0.003
HUMANE	58,948	110.6	6	8	1.333	0.000	0.002
MUT AID	21,758	36.6	13	2	0.154	0.000	0.002
ICS	18,792	33.1	11	0	0.000	0.000	0.000
FIRE	3,924	8.3	0	0	0.000	0.000	0.000
OTHER	1,469	2.1	0	0	0.000	0.000	0.000
MWCSD	537	1.1	0	0	0.000	0.000	0.000
TEST	751	0.8	0	0	0.000	0.000	0.000
CHP	85	0.1	0	0	0.000	0.000	0.000
RPD	57	0.1	0	0	0.000	0.000	0.000
SCHOOL	6	0.0	0	0	0.000	0.000	0.000
Totals:	5,378,204	8,960.3	909	548	0.603	0.000	0.002
Previous Year:	5,338,856	8,783	1,872	1,148	1	0	0
Change:	39,348	177.1	-963	-600	-0.010	0.000	-0.002



MERA 2012 System Busy Seconds

S
E
C
O
N
D
S

